

Second High Level Forum on Global Geospatial Information Management

Session 4: “Geospatial Information and Sustainable Development (Rio+20)”

Qatar National Convention Centre
Doha, 6th February 2013

Professor Jacqueline McGlade
European Environment Agency



Our World Is Changing Rapidly

There is a need for timely, fit-for-purpose information on the state of the environment

Climate Change

Population

Political and
Social Conflict

Loss of
Biodiversity

Energy

Water Security

Natural
Resources



Economic Uncertainty

Urbanization and Land Use

Human Health

Security

Technology Advancements

Poverty & Inequality

Globalization

... We Need Collective Intelligence and Understanding

Assessments and networks



Networks of Environment, Information Technology and Space Professionals

People

Organizations

Cultures

Disciplines

Interests

Backgrounds



Data and information is key to a better understanding



Technology Is Changing Rapidly

Co-evolving And Enabling New Possibilities



Web Enabled
Collaboration
Services Volume
Data
SEIS Ownership
Crowdsourcing
Access
Privacy

Bandwidth
Collaboration
Access
Connectivity
Social Networking
Wireless

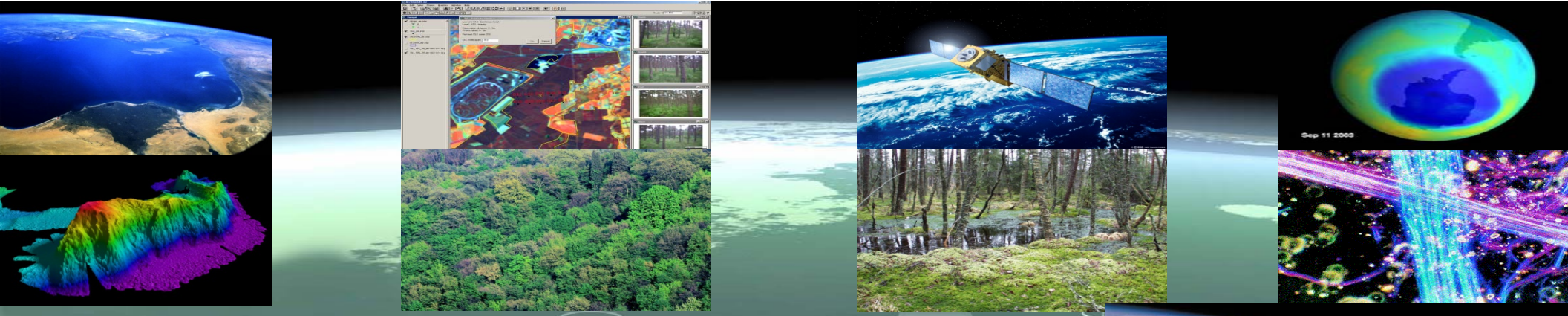
Open Access
Usability
Multidimensional
Location **GIS** Mobile
Data Management
Analysis Inspire
Solutions

Tracking
Sensor Network
Real Time
Measurement
GPS
Remote Sensing
Lidar

Distributed
Security
Mobile
Computing
Performance
Visualization
Cloud
SaaS

Predictive
Real Time
Networks
Science
Modeling
Analytics

Helping Us Build A New Approach

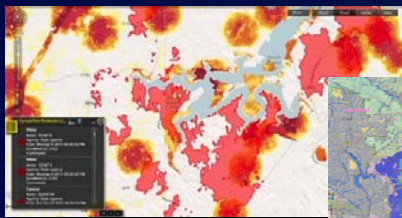


Copernicus - The European Earth Observation Programme

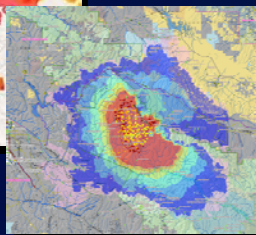


Responding to Natural Disasters

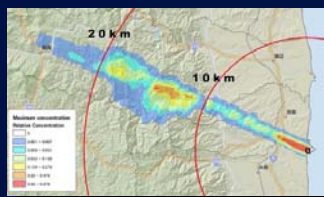
Fires



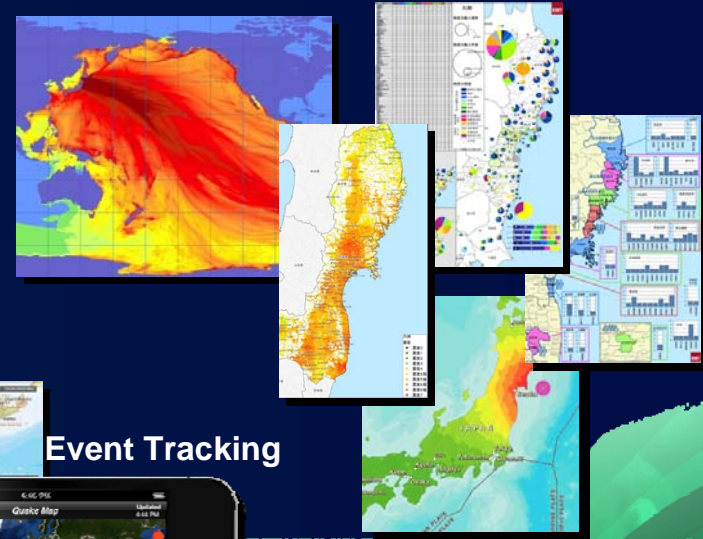
Fire Simulation



Radiation Exposure



Forecasting Earthquakes, Storms & Tsunami



Flooding



Damage Assessment



Situational Awareness



Event Tracking



Planning for the Future – Green Economy

Economic
Development



Housing &
infrastructure



Urban Design



Land Use



Land Use and
Noise



Prague

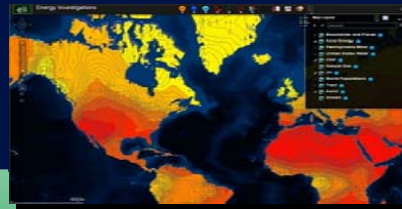
Demographic
Growth



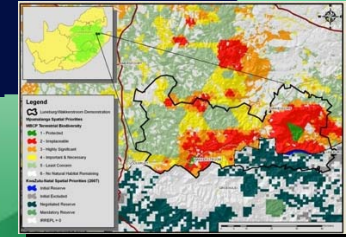
Climate
adaptation
planning



Solar Potential



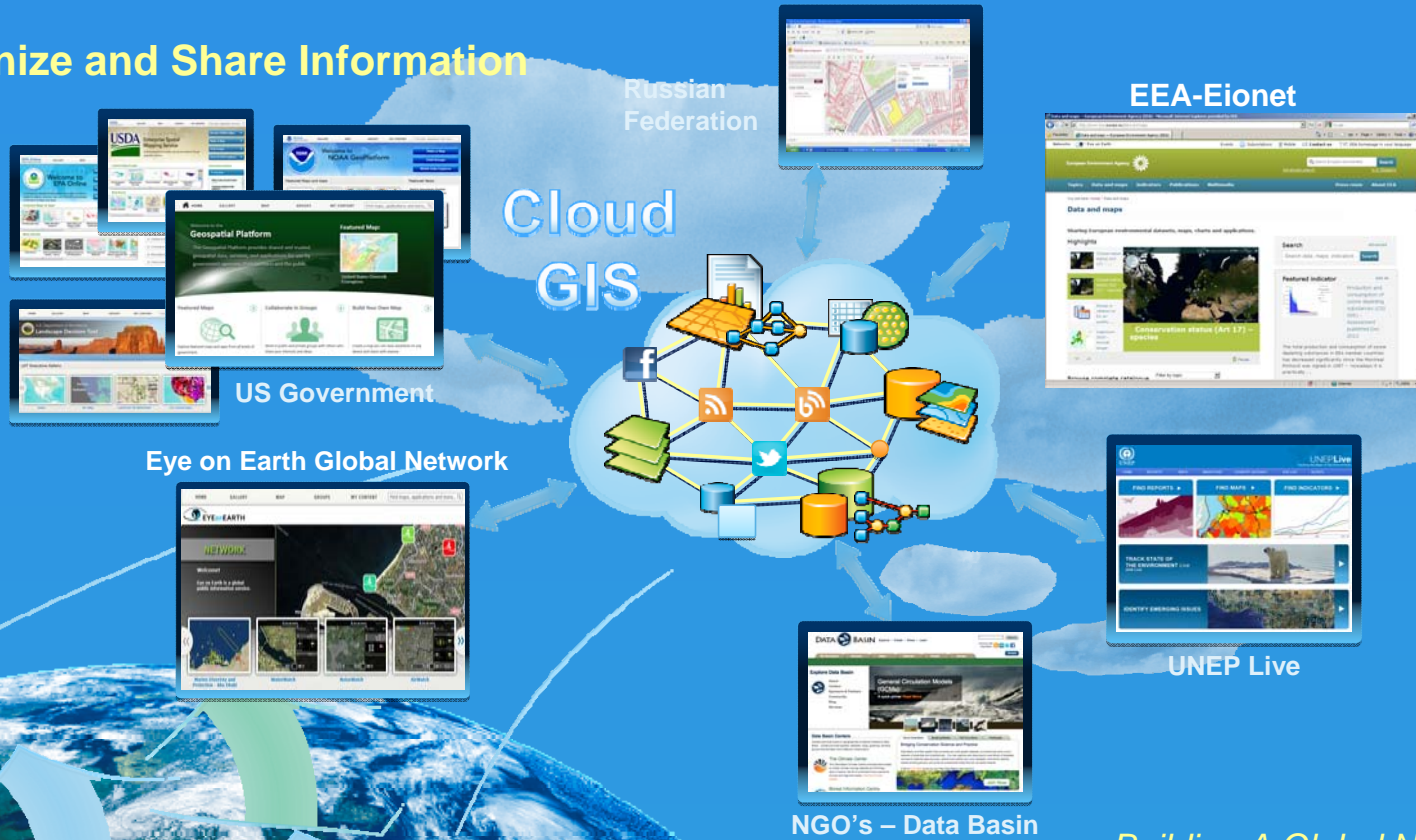
Nature
Conservation



Germany

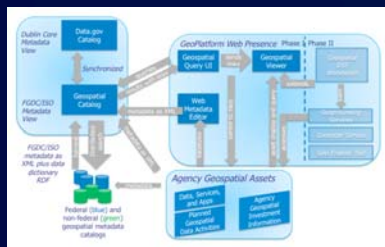
Rapid Adoption of Common Platforms and Standards

To Organize and Share Information

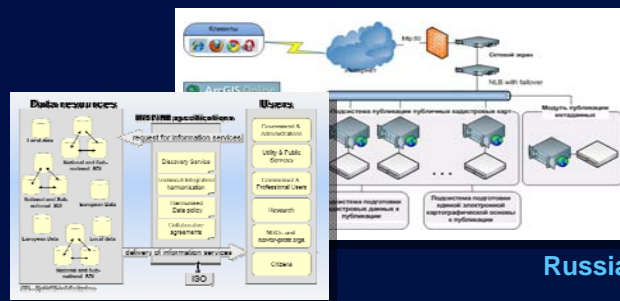


... Building A Global Network

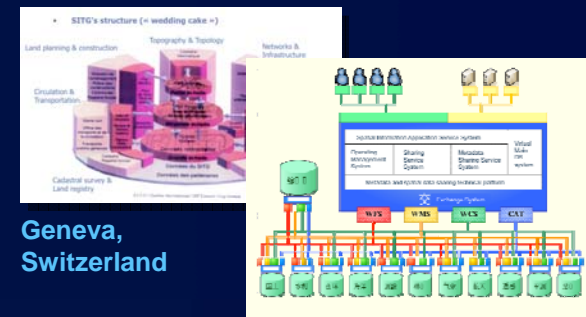
Global geospatial infrastructure - UN



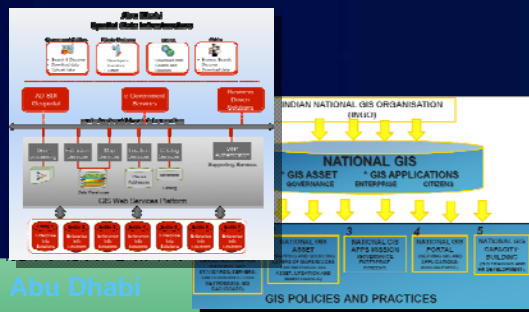
US



Russia



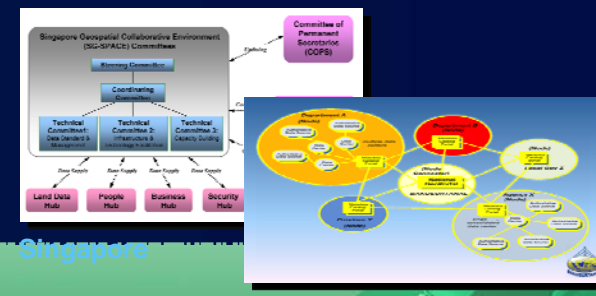
China



India

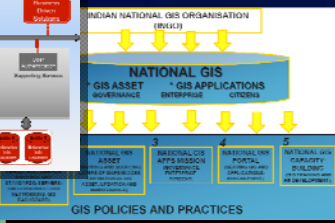


Singapore



Indonesia

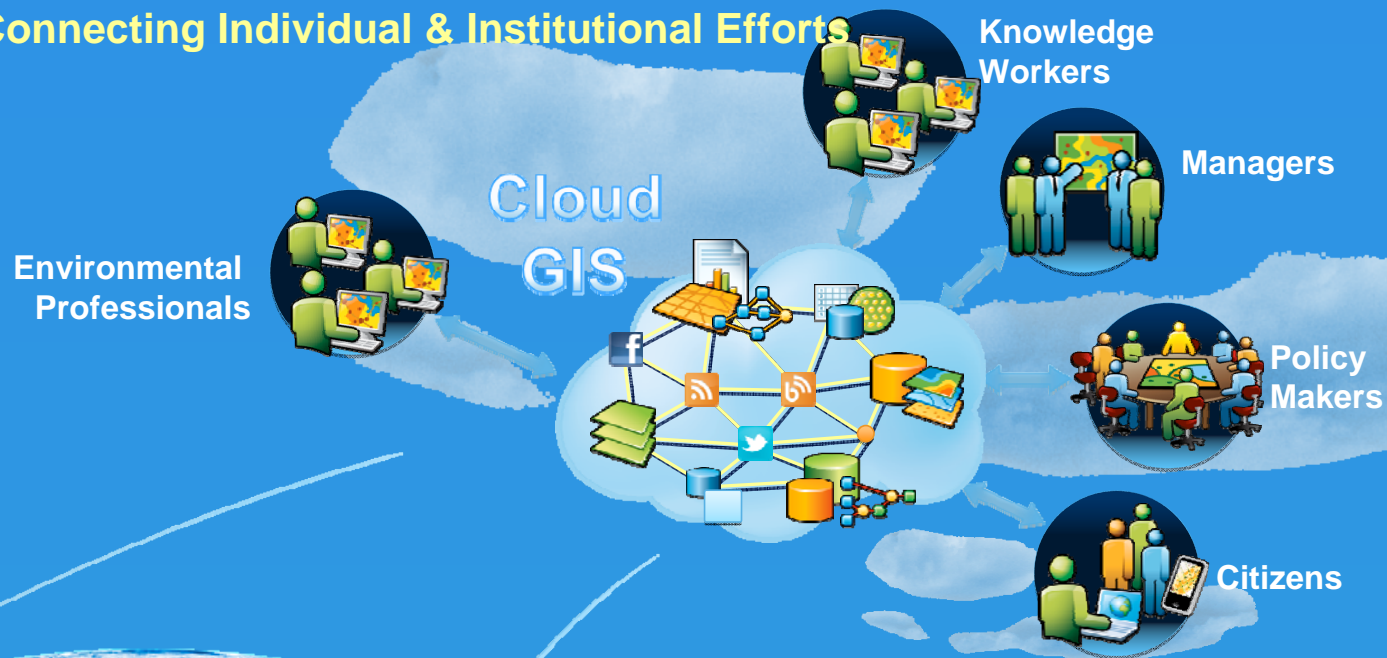
Abu Dhabi



Abu Dhabi

A New Pattern Is Emerging

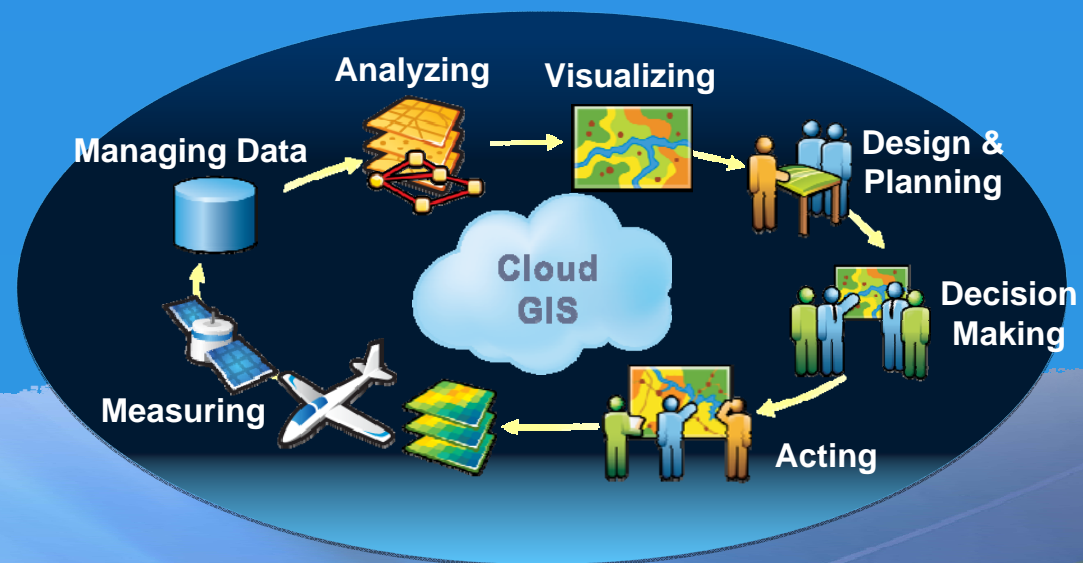
Opening And Connecting Individual & Institutional Efforts



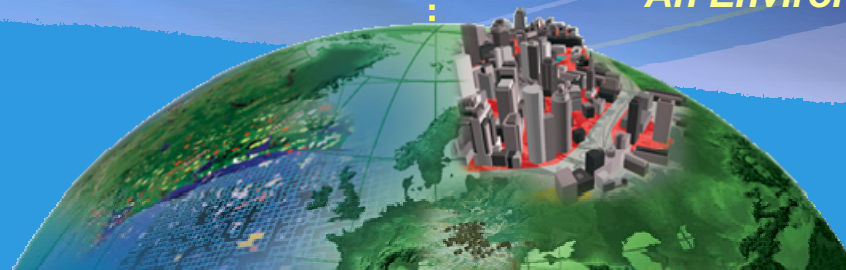
*Creating A Vast Network . . .
. . . Of Collective Environmental Knowledge*

SEIS will help streamline & coordinate our work

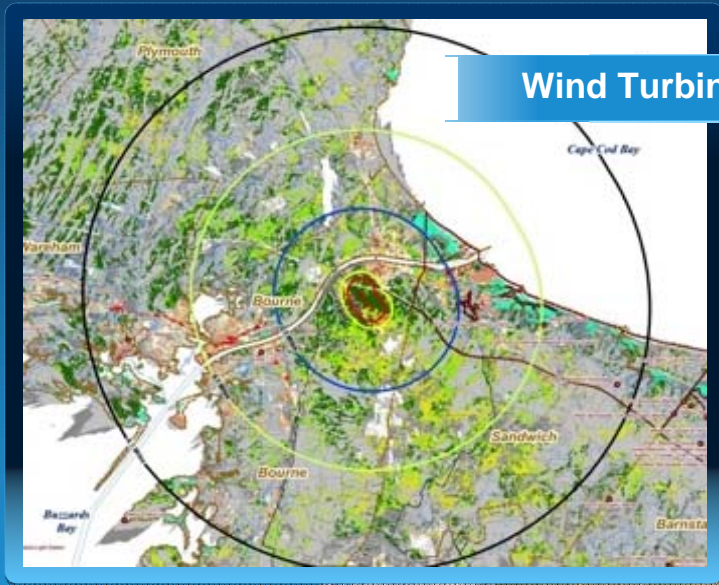
Integrating Activities Across Organizations



An Environmental Nervous System ...



Good Information Services Support Decision Making



Wind Turbine Suitability

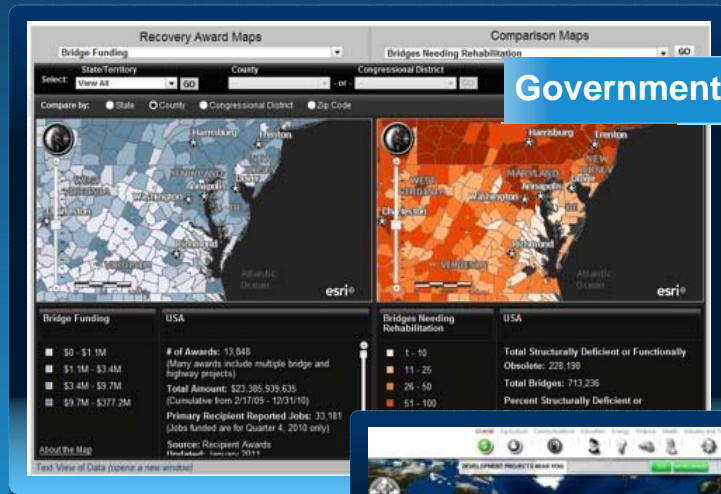


Air quality pilot studies

Leveraging Spatial Analysis

*Helping Us Understand . . .
. . . And Support Action*

Good Information Products Show Status – Situation Awareness



Government Expenditures vs. Need

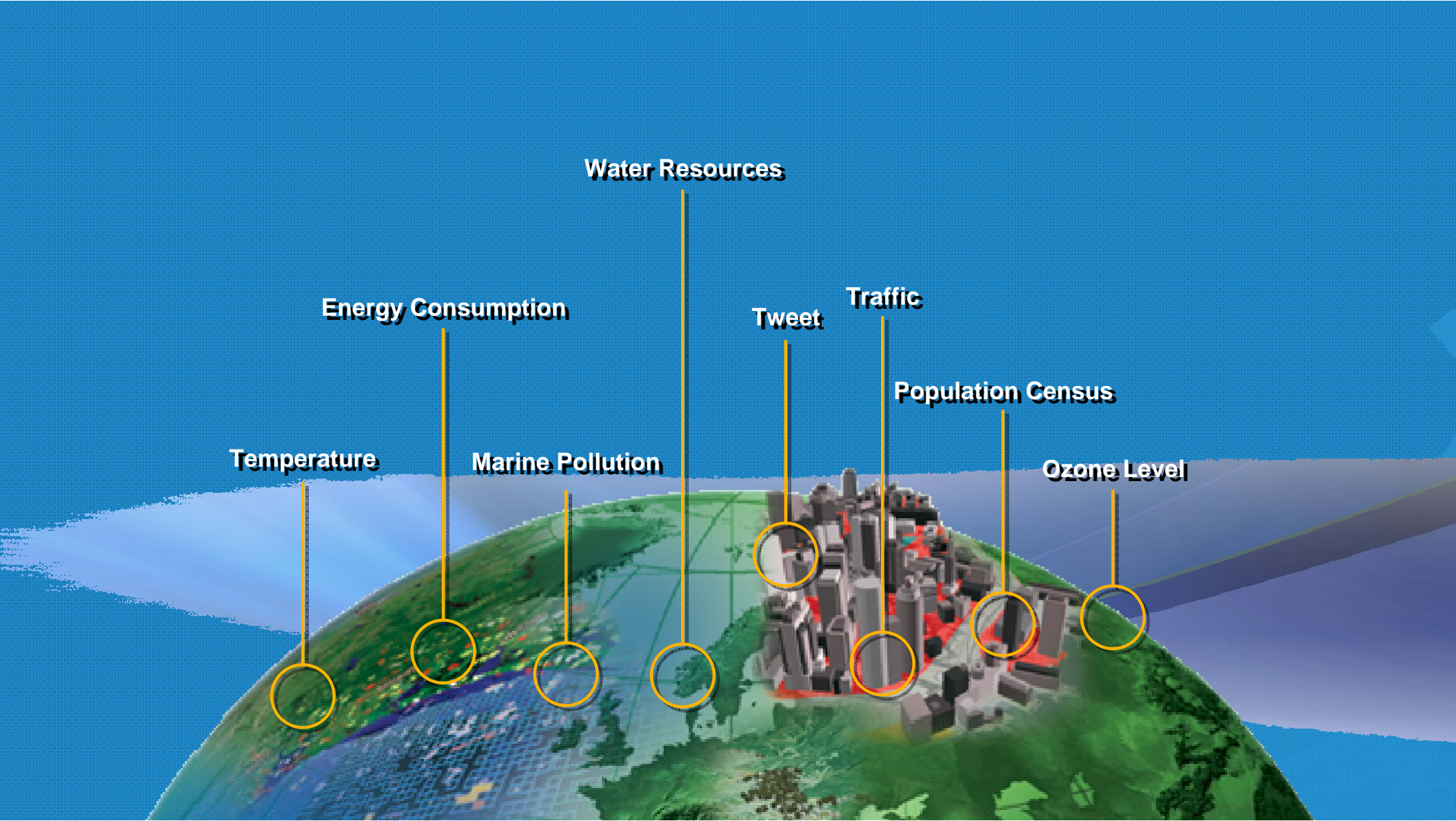


AID Funding

Financial grants



Helping Us Understand . . .
. . . And Support Action



Water Resources

Energy Consumption

Tweet

Traffic

Population Census

Temperature

Marine Pollution

Ozone Level



Thank you

Prof. Jacqueline McGlade
Executive Director, EEA